



CP724H – CP726H

Launch Pack

Content CP724H / CP726H Launch Pack

- Product pictures
- Feature & Benefits
- Technical data
- Spare parts drawing & list
- Key selling points

Product Pictures



CP724H/CP726H - Key Selling Points



- **DURABLE** : Pin clutch mechanism in oil bath
- **COMPACT** : 5.6 in - 146 mm length
- **EASY TO HANDLE** : One handed push button forward / reverse
- **INSULATION & COMFORT** : Curved handle with Thermo-Plastic Rubber

Features & Benefits: Compact & Durable

COMPACT & DURABLE

5.6 in - 146 mm length

3.1 lbs - 1.4 Kg



EASY TO HANDLE : One handed push button forward / reverse with power regulator on the back
-> 2 power setting positions in both sides

DURABLE & SMOOTH OPERATION

Pin clutch mechanism in oil bath



RUGGED

Aluminum body with composite cover

Friction Ring Socket Retainer

EASY TO OPERATION:

Double teasing trigger

INSULATION & COMFORT

Curved handle with Thermo-Plastic Rubber injected in housing for a durable and comfortable grip.
Resistant to most chemicals used in workshops.

FLEXIBLE

360° swivel air inlet

CP724H / CP726H: New Product Design



Previous Part Numbers
CP724H – 8941007240
CP726H - 8941007260

Previous Part Numbers
CP724H – 8941007241
CP726H - 8941007261

New version of the
CP724H & CP726H
shipping December 2014

Same max torque : 200 ft.lbs - 271 Nm

Same weight : 3.1 lbs. - 1.4 kg

Same One handed push button forward / reverse with power regulator on the back



More compact : length -> 6.0" – 152 mm vs 5.7" – 146 mm

More comfortable & better balanced : curved handle right under center of inertia of the tool

No more composite sleeve handle: TPR injected grip on aluminum housing

At the CP brand language

Technical data

Specifications	Values	Chicago Pneumatic	Chicago Pneumatic
Model name		CP724H	CP726H
Impact Mechanism		Pin Clutch	Pin Clutch
Socket retention		3/8"	1/2"
Anvil	[in]	Friction ring socket retainer	Friction ring socket retainer
Free speed	[RPM]	9600	9600
Working Torque	[Nm]	92-257	92-257
Working Torque	[ft-lbs.]	68-190	68-190
Max torque	[Nm]	271	271
Max torque	[ft-lbs.]	200	200
Weight	[kg]	1,4	1,4
Weight	[lbs]	3.1	3.1
Length	[in]	5.7	5.7
Length	[mm]	146	146
Air cons. average	[cfm]	3.8	3.8
Air cons. average	[l/s]	1.7	1.7
Air con. @load	[cfm]	15	15
Air con. @load	[l/s]	7.1	7.1
Sound level	[dBA]	91	91
Sound power	[dBA]	102	102
Vibration	[m/S ²]	4.4 – k=2.4	4.4 – k=2.4

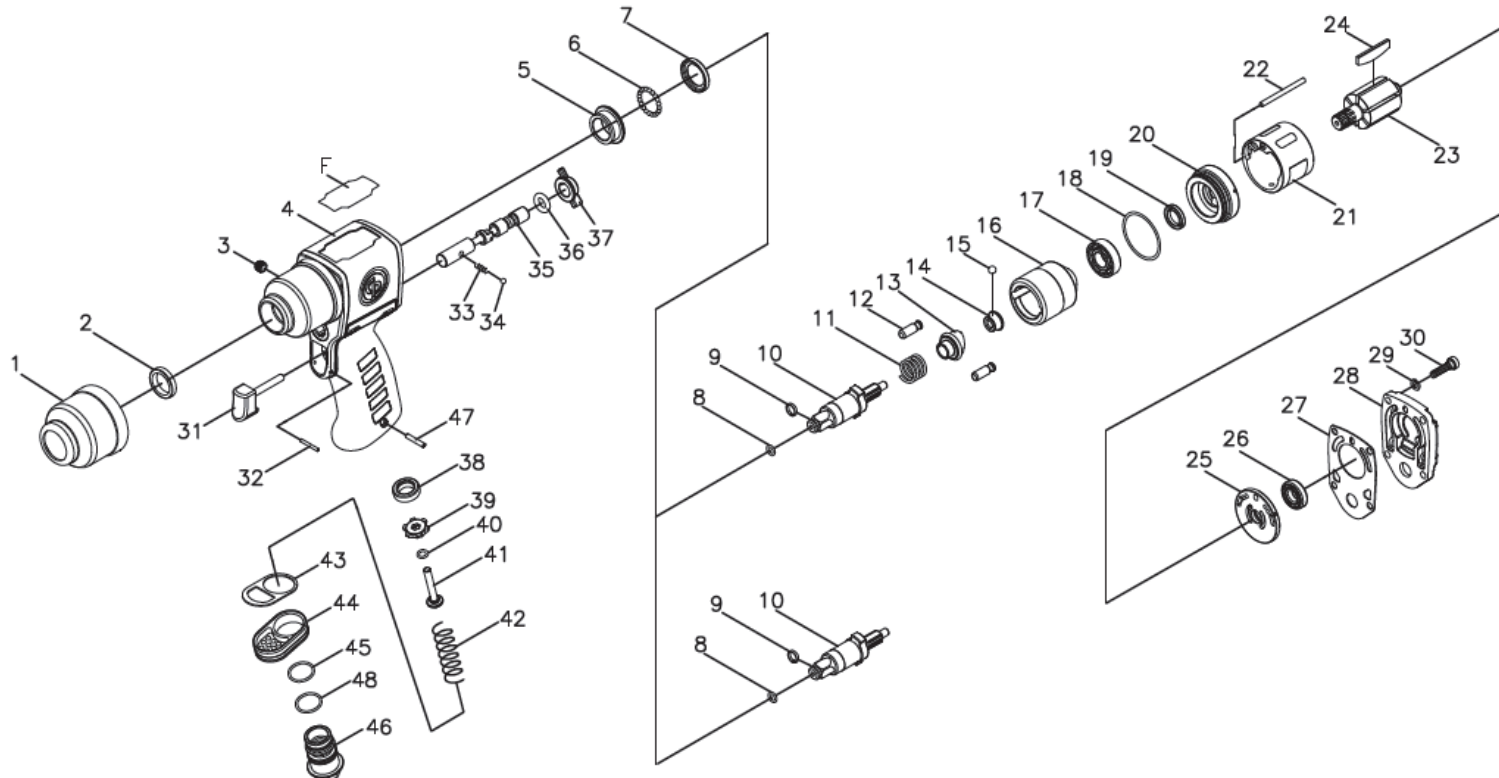
Hierarchy & IRP

Value	Description	Description
SAP #	8941007241	8941007261
Description	CP724H	CP726H
Hierarchy	770	7704 24
Rate group		YP

Spare Parts Drawing



CP724H/CP726H
Serie G
Impact Wrench 3/8" & 1/2"




Item	Bond	Tightening torque
30/4		5.3 N.m 3.9 ft.lbs



Spare Parts List

Item	Part No	Description	Qty.
A	8940172549	Inlet Kit	
46		Air Inlet(1/4"NPT)	1
45		O-Ring	1
48		O-Ring	1
B	8940172712	Exhaust Deflector Kit	
44		Exhaust Deflector	1
43		Gasket	1
C	8940172550	Throttle Kit	
39		Valve Stem Seat	1
40		O-Ring	1
41		Valve Stem	1
42		Spring	1
38		Bushing	1
D	8940172551	Reverse Valve Kit	
37		Regulator Knob	1
35		Reverse Valve	1
34		Steel Ball	1
33		Spring	1
36		O-Ring	1
E	8940172552	Trigger Kit	
31		Trigger	1
32		Spring Pin	1
F	8940172553	Screw Hex / Washer Kit	
30		Cap Screw	4
29		Spring Washer	4
G	8940172555	Liner Kit	
21		Liner	1
22		Stem Liner	1
H	8940172556	Rear Endplate Kit	
22		Stem Liner	1
26	8940172527	Ball Bearing	1
25		Rear End Plate	1
I	8940172557	Front Endplate Kit	
17	8940172519	Ball Bearing	1
18		O-Ring	1
19		Oil Seal	1
20		Front End Plate	1
22		Stem Liner	1
J	8940172559	Cam Kit	
14		Cam Foundation	1
15		Steel Ball	1
13		Cam	1
K	8940172560	Pin Kit	
12		Hammer Pin	2
11		Spring	1

Item	Part No	Description	Qty.
L	8940172561	Anvil Kit 1/2" CP726H (Include L1)	
10		1/2" Anvil	1
L1	2050562553	Socket retaining kit 1/2"	
8		O-Ring	5
9		Anvil Collar	5
M	8940172562	Anvil Kit 3/8" CP724 H (Include M1)	
10		3/8" Anvil	1
M1	8940172485	Socket retaining kit 3/8"	
8		O-Ring	5
9		Anvil Collar	5
N	8940172713	Anvil Bushing Kit	
5		Anvil Bushing	1
6		Steel Ball(set of 20)	1
7		Washer	1
O	8940172563	Tune-Up Kit CP726H (Include L1)	
P	8940172447	Tune-Up Kit CP724H (Include M1)	
2		Oil Seal	1
18		O-Ring	1
19		Oil Seal	1
24	8940172525	Rotor Blade (set of 6)	1
27	8940172528	Rear Gasket	1
36		O-Ring	1
40		O-Ring	1
45		O-Ring	1
48		O-Ring	1
Q	8940172714	Small part Kit	
3		Screw	1
22		Stem Liner	1
32		Spring Pin	1
33		Spring	1
34		Steel Ball	1
47		Spring Pin	1
		Single Part	
1	8940172505	Front Rubber	1
4	8940172506	Motor Housing	1
16	8940172518	Hammer Cage	1
23	8940172524	Rotor	1
28	8940172529	Rear Cover	1

	8940172545	WARNING / NAME PLATE CP726H
	8940172546	WARNING / NAME PLATE CP724H
	8940172541	OPERATOR'S MANUAL
	6159948710	SAFETY INSTRUCTIONS

Recommended Accessories

Clutch oil (for clutch lubrication)
SW40



Protect-a-lube Oil (for air lubrication)
CA149661 (4 oz - 0.12 l)
CA000046 (20 oz - 0.59 l)



Airless Oil (to clean motor parts)
PO89507 (1 gal - 3.8 l)

Spare parts without part number are not sold separately - High wear parts underlined
Contact us at www.cp.com

8940172543 Rev 01
07/2014

Spare Parts List IRP

P_MATNR	DESCR1	C_MATNR	DESCR13	IRP	CURRENCY	Stock	PRIORITY	IRP	CURRENCY	Stock	PRIORITY
8941007241	CP724H MODEL G	8940172549	INLET KIT	15	EUR	0	3	20	USD	0	5
		8940172712	EXHAUST DEFLECTOR KIT	5	EUR	0	3	7	USD	0	5
		8940172550	THROTTLE KIT	8	EUR	53	5	10	USD	0	5
		8940172551	REVERSE VALVE KIT	14	EUR	23	5	18	USD	0	2
		8940172552	TRIGGER KIT	5	EUR	53	5	7	USD	0	2
		8940172553	SCREW HEX / WASHER KIT	6	EUR	0	3	8	USD	0	5
		8940172555	LINER KIT	25	EUR	0	3	33	USD	0	5
		8940172556	REAR ENDPLATE KIT	17	EUR	31	5	22	USD	0	5
		8940172557	FRONT ENDPLATE KIT	20	EUR	22	5	26	USD	0	5
		8940172559	CAM KIT	17	EUR	29	5	22	USD	0	5
		8940172560	PIN KIT	12	EUR	29	5	16	USD	0	2
		8940172713	ANVIL BUSHING KIT	21	EUR	17	5	27	USD	0	3
		8940172525	BLADE SET OF 6	5	EUR	35	5	7	USD	0	5
		8940172505	FRONT RUBBER	4	EUR	82	5	4	USD	0	5
		8940172714	SMALL PART KIT	7	EUR	35	5	9	USD	0	5
		8940172505	FRONT RUBBER	4	EUR	82	5	4	USD	0	5
		8940172506	MOTOR HOUSING	88	EUR	0	3	114	USD	0	3
		8940172518	HAMMER CAGE	25	EUR	0	3	33	USD	0	3
		8940172524	ROTOR	20	EUR	0	3	26	USD	0	5
		8940172529	REAR COVER	13	EUR	0	3	17	USD	0	2
		8940172562	ANVIL KIT 3/8" CP724 H (INCLUDE M1)	34	EUR	21	5	44	USD	0	5
		8940172485	SOCKET RETAINING KIT 3/8"	6	EUR	58	5	8	USD	0	5
		8940172447	TUNE-UP KIT CP724H (INCLUDE M1)	25	EUR	18	5	33	USD	0	5
8941007261	CP726H MODEL G	8940172549	INLET KIT	15	EUR	0	3	20	USD	0	5
		8940172712	EXHAUST DEFLECTOR KIT	5	EUR	0	3	7	USD	0	5
		8940172550	THROTTLE KIT	8	EUR	53	5	10	USD	0	5
		8940172551	REVERSE VALVE KIT	14	EUR	23	5	18	USD	0	2
		8940172552	TRIGGER KIT	5	EUR	53	5	7	USD	0	2
		8940172553	SCREW HEX / WASHER KIT	6	EUR	0	3	8	USD	0	5
		8940172555	LINER KIT	25	EUR	0	3	33	USD	0	5
		8940172556	REAR ENDPLATE KIT	17	EUR	31	5	22	USD	0	5
		8940172557	FRONT ENDPLATE KIT	20	EUR	22	5	26	USD	0	5
		8940172559	CAM KIT	17	EUR	29	5	22	USD	0	5
		8940172560	PIN KIT	12	EUR	29	5	16	USD	0	2
		8940172561	ANVIL KIT 1/2" CP726H (INCLUDE L1)	36	EUR	21	5	47	USD	0	5
		2050562553	SOCKET RETAINERS KIT	5	EUR	70	1	7	USD	75	5
		8940172713	ANVIL BUSHING KIT	21	EUR	17	5	27	USD	0	3
		8940172563	TUNE-UP KIT CP726H (INCLUDE L1)	25	EUR	18	5	33	USD	0	5
		8940172525	BLADE SET OF 6	5	EUR	35	5	7	USD	0	5
		8940172714	SMALL PART KIT	7	EUR	35	5	9	USD	0	5
		8940172505	FRONT RUBBER	4	EUR	82	5	4	USD	0	5
		8940172506	MOTOR HOUSING	88	EUR	0	3	114	USD	0	3
		8940172518	HAMMER CAGE	25	EUR	0	3	33	USD	0	3
		8940172524	ROTOR	20	EUR	0	3	26	USD	0	5
		8940172529	REAR COVER	13	EUR	0	3	17	USD	0	2

CP724H/CP726H - Key Selling Points



- **DURABLE** : Pin clutch mechanism in oil bath
- **COMPACT** : 5.6 in - 146 mm length
- **EASY TO HANDLE** : One handed push button forward / reverse
- **INSULATION & COMFORT** : Curved handle with Thermo-Plastic Rubber

People. Passion. Performance.

Chicago Impact
Manufacture
Optimizer
Efficient
Ergonomic
Power
Distributor
Complete
Equipment
Air
Construction
Drive
Manage
Product
Market Coverage
Turn Heroes
Trained
Capacity
Simple
Smart
Last
Repair
Professional
Business
Market Space
Extract
Vehicle service
Prevent Produce
Roads
Industrial
Tools
Design
Success
Proven
Control
Overhaul
Maintain
Engineer
Excite
History
Breaking
Balanced
Global
Meet
Quality
Original Parts
Clean
Needs
Close
Customer
Kits
Drill
Foundries

Performance
Passion
Comfort
Grinder Mechanics
Create
Pneumatic
Priority
Future
Sustainable
Convenient
Comprehensive
Compressors
Go
Pick
Passionate
Beneficial
Consumables
Support
Innovation
Solid
Experience
Demolish
Rugged
Do
Transform
Operator
Advice
You
Footprint
Alongside
Dedication
Maximize
Reliability
Fulfill
Lead
Excel
Tradition
Factories
Rule
FIX
Proud
Demands
Spare
Shipyard
Assemble
Partnership
Touch
Bodyshop
Raw
Warranty
Right
Fun
Tough
Mission
Available
Fast
Duty
Dedicate
Build
Match
Change
Convenient
Research
Value
Perform
Aftermarket
Compaction
Save
Service
Solution
Teamwork
Tires
Safety
Optimize
Automation
Extraction
Industry
Efficiency
Proximity
Quick
World
Build
Team
Pride
Build
Share
Yes
Stretch



**Chicago
Pneumatic**